

Shaded areas indicate US recessions - 2015 research.stlouisfed.org

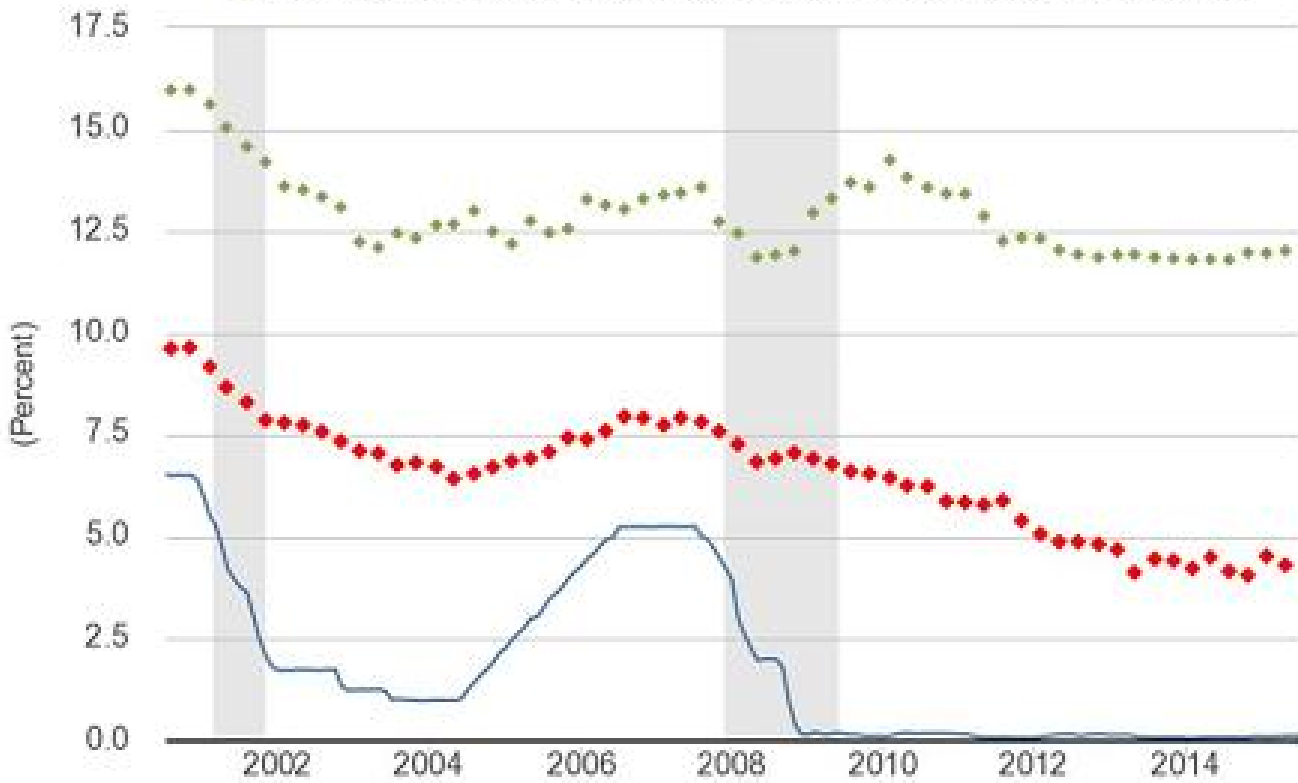
— Real Gross Domestic Product



Source: US Bureau of Economic Analysis

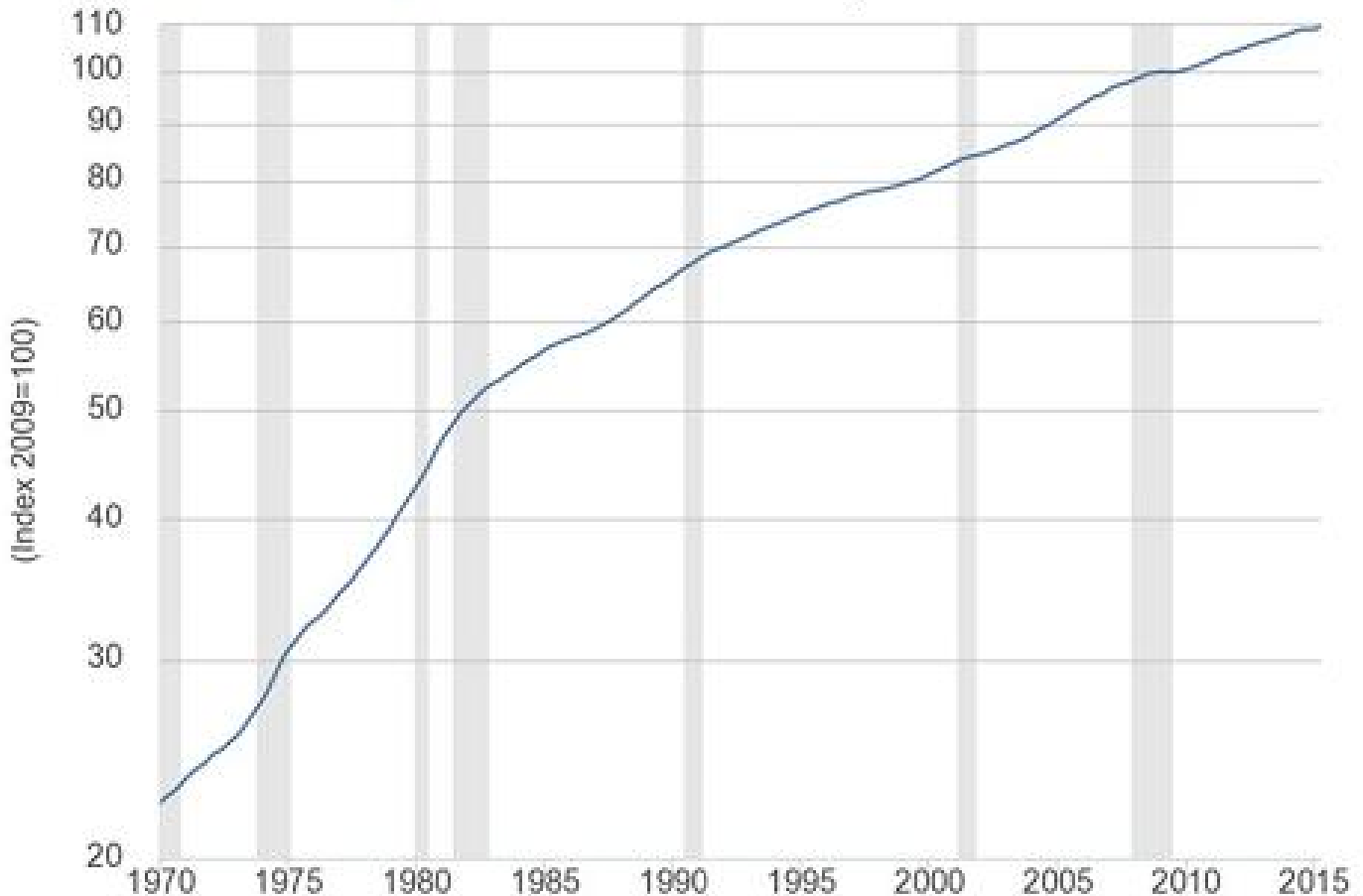
Shaded areas indicate US recessions - 2015 research.stlouisfed.org

- Effective Federal Funds Rate
- ◆ Finance Rate on Consumer Installment Loans at Commercial Banks, New Autos 48 Month Loan
- ◆ Commercial Bank Interest Rate on Credit Card Plans, All Accounts



Shaded areas indicate US recessions - 2015 research.stlouisfed.org

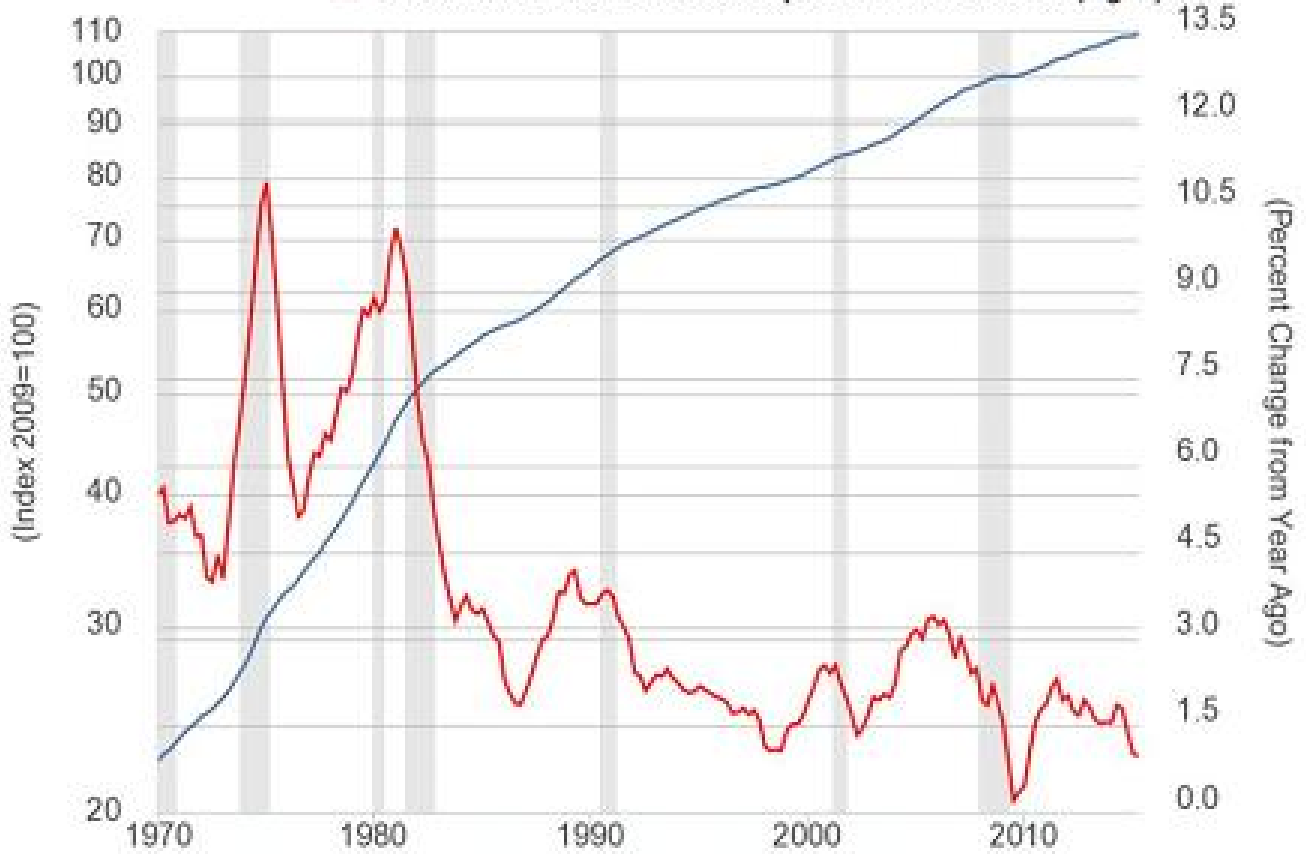
- Gross Domestic Product: Implicit Price Deflator



Source: US Bureau of Economic Analysis

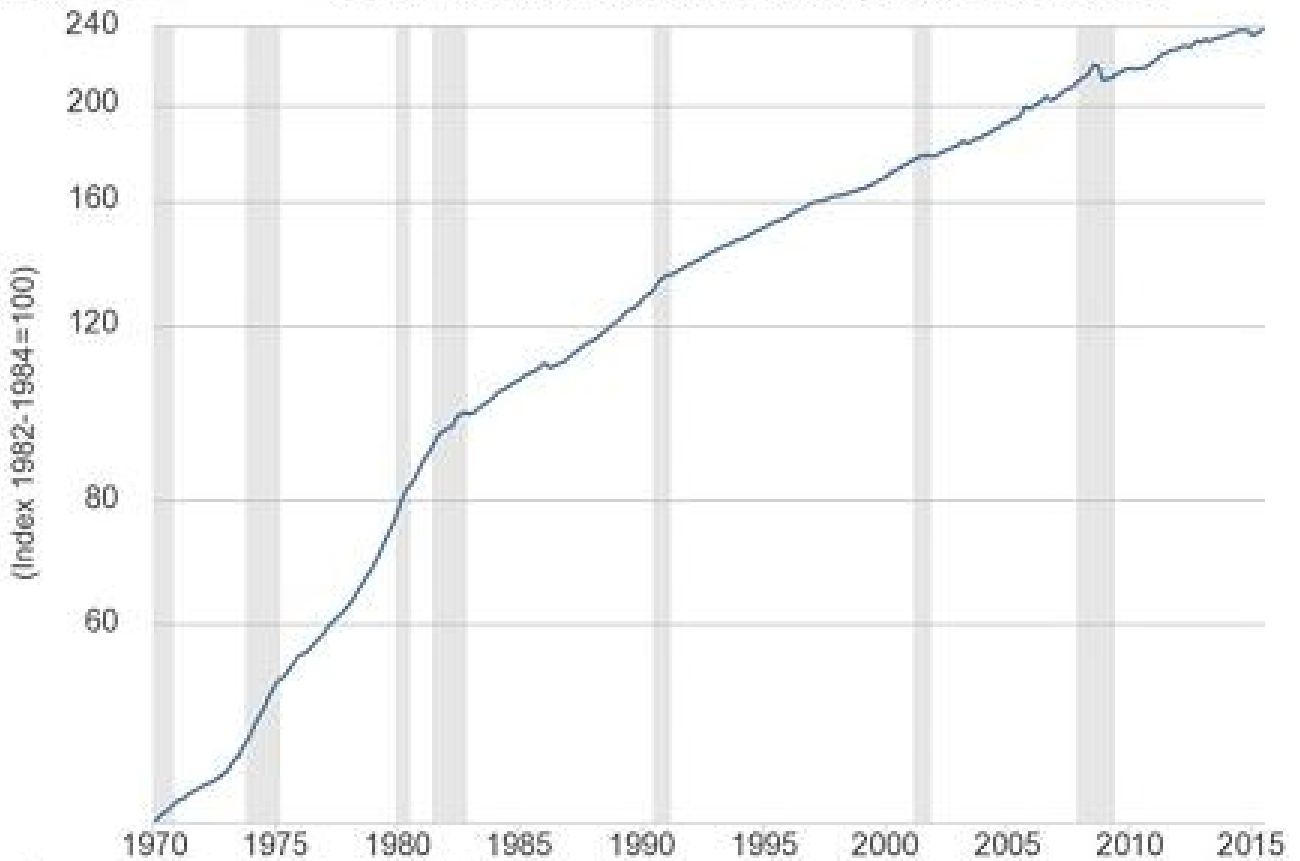
Shaded areas indicate US recessions - 2015 research.stlouisfed.org

— Gross Domestic Product: Implicit Price Deflator (left)
— Gross Domestic Product: Implicit Price Deflator (right)



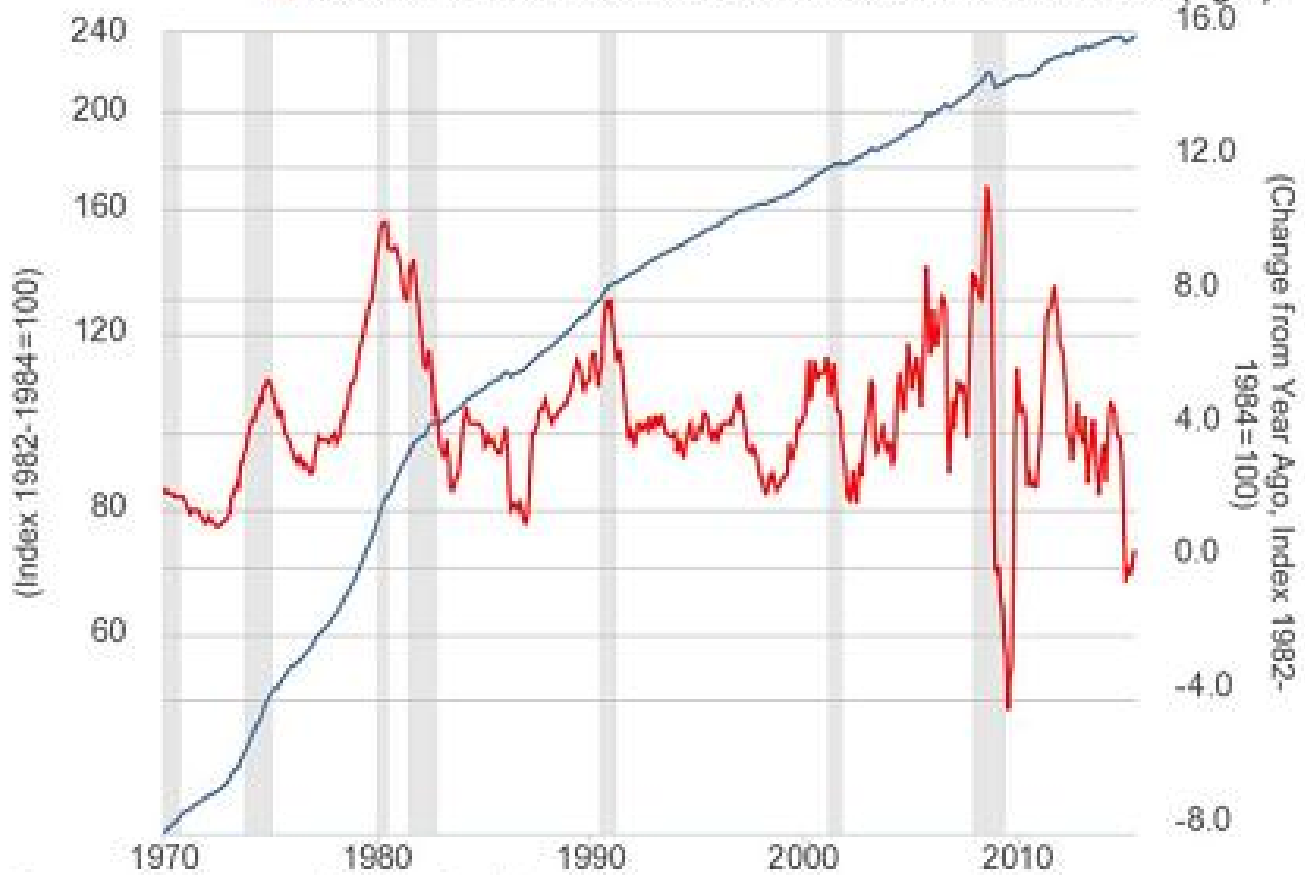
Source: US. Bureau of Economic Analysis
Shaded areas indicate US recessions - 2015 research.stlouisfed.org

— Consumer Price Index for All Urban Consumers: All Items



Source: US. Bureau of Labor Statistics
Shaded areas indicate US recessions - 2015 research.stlouisfed.org

— Consumer Price Index for All Urban Consumers: All Items (left)
 — Consumer Price Index for All Urban Consumers: All Items (right)



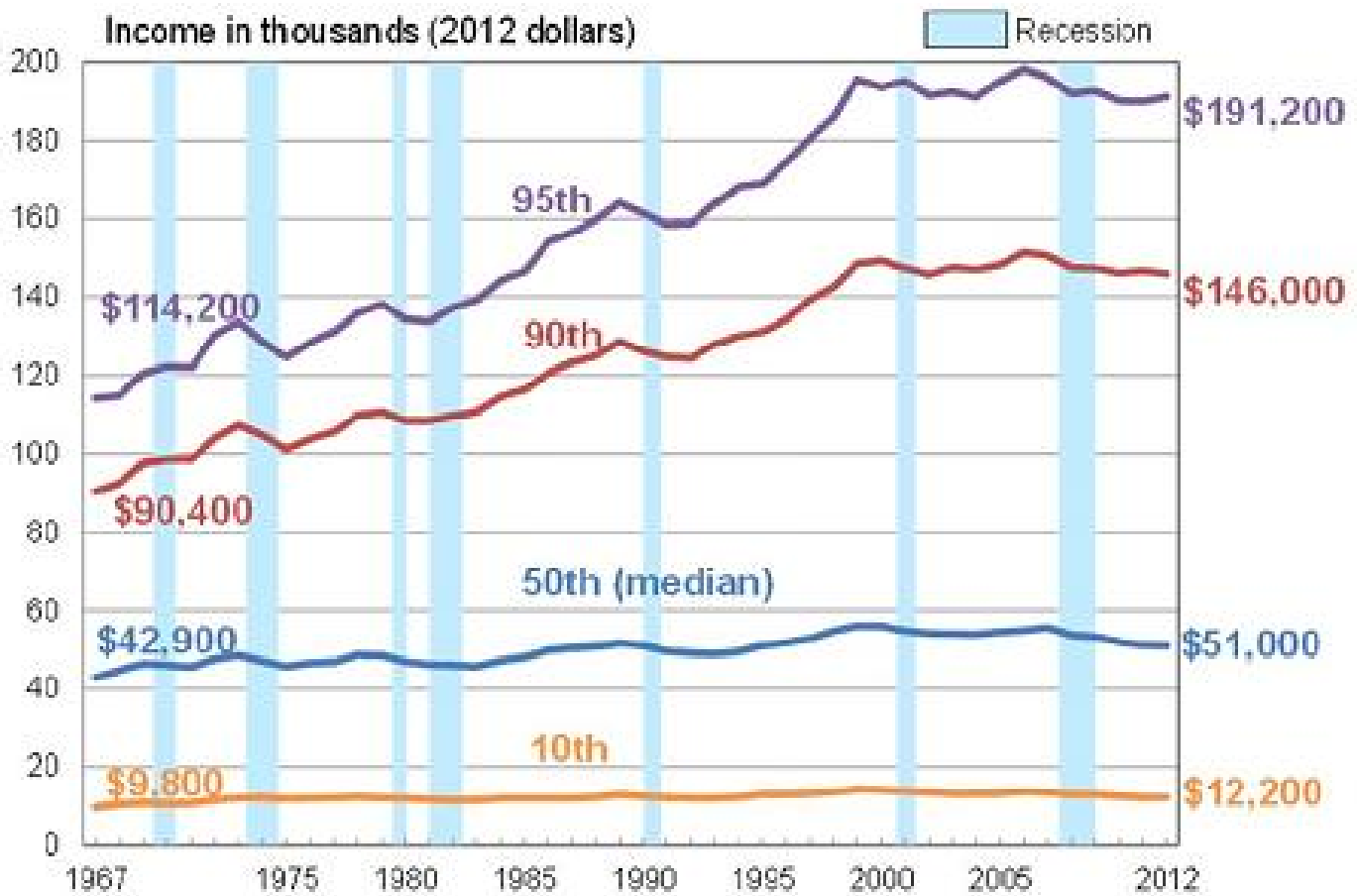
Source: US, Bureau of Labor Statistics

Shaded areas indicate US recessions - 2015 research.stlouisfed.org

— Consumer Price Index for All Urban Consumers: All Items
 — Consumer Price Index for All Urban Consumers: All Items Less Food & Energy

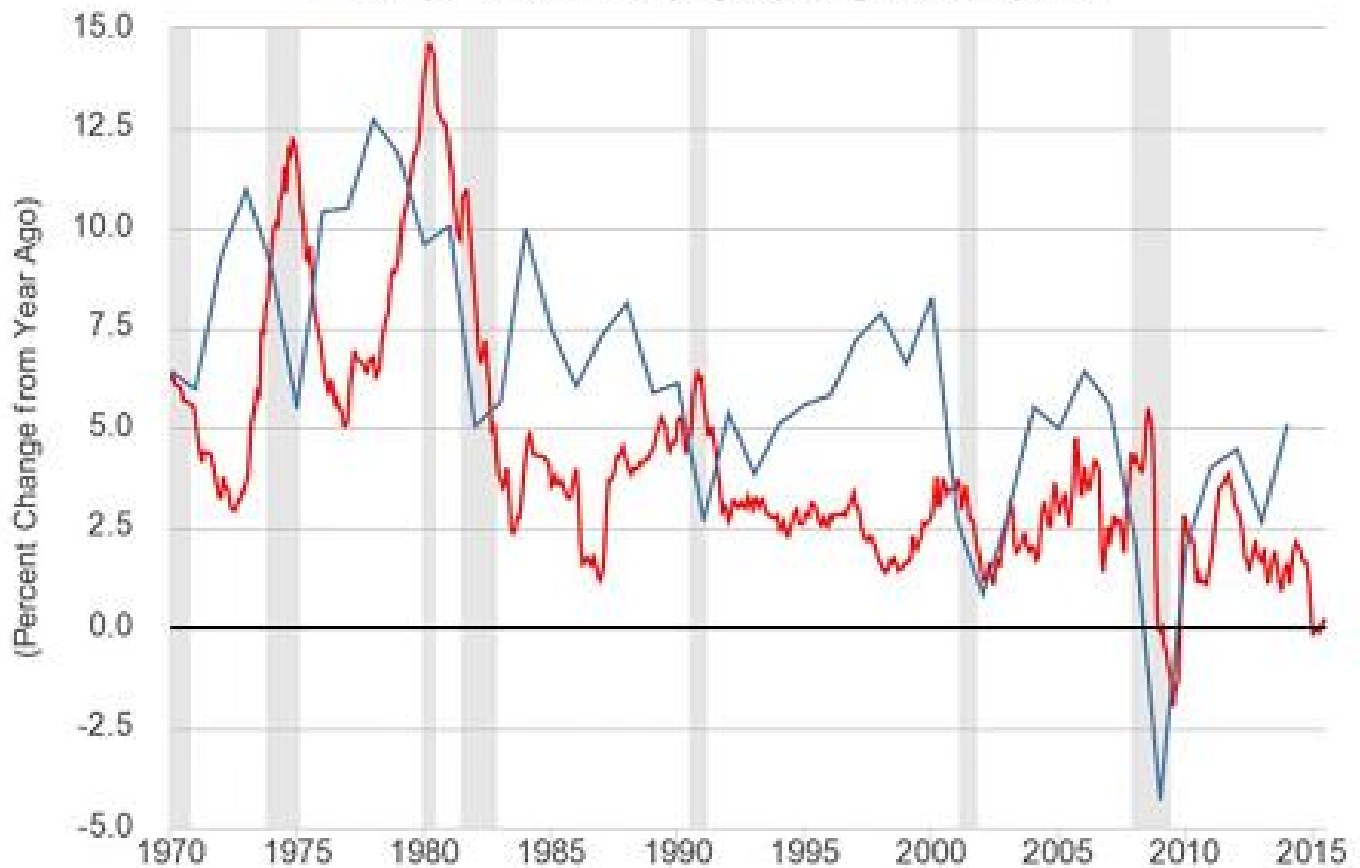


Shaded areas indicate US recessions - 2015 research.stlouisfed.org



FRED

— Consumer Price Index for All Urban Consumers: All Items
 — Compensation of employees: Wages and salaries



Shaded areas indicate US recessions - 2015 research.stlouisfed.org